



## 6 Patrick Clayton Drive Repton Park, Ashford, TN23 3SR

**£1,200 Per Month**

Two bedroom ground floor apartment located on the popular Repton Park development, which will be available from the end of June. Well situated for local amenities this well presented property comprises an open plan lounge/kitchen with fitted appliance, two double sized bedrooms, master bedroom en-suite, family bathroom and one allocated parking space. If you are looking for some outside space this home also features a private terrace which is accessed from the lounge area. The property also benefits from gas central heating. Call us now to register your interest and to arrange a viewing which is highly recommended.

Minimum tenancy 12 calendar months  
Security deposit £1384.00  
Council Tax Band - B (Ashford Borough Council)  
EPC Rating - B

### Viewing

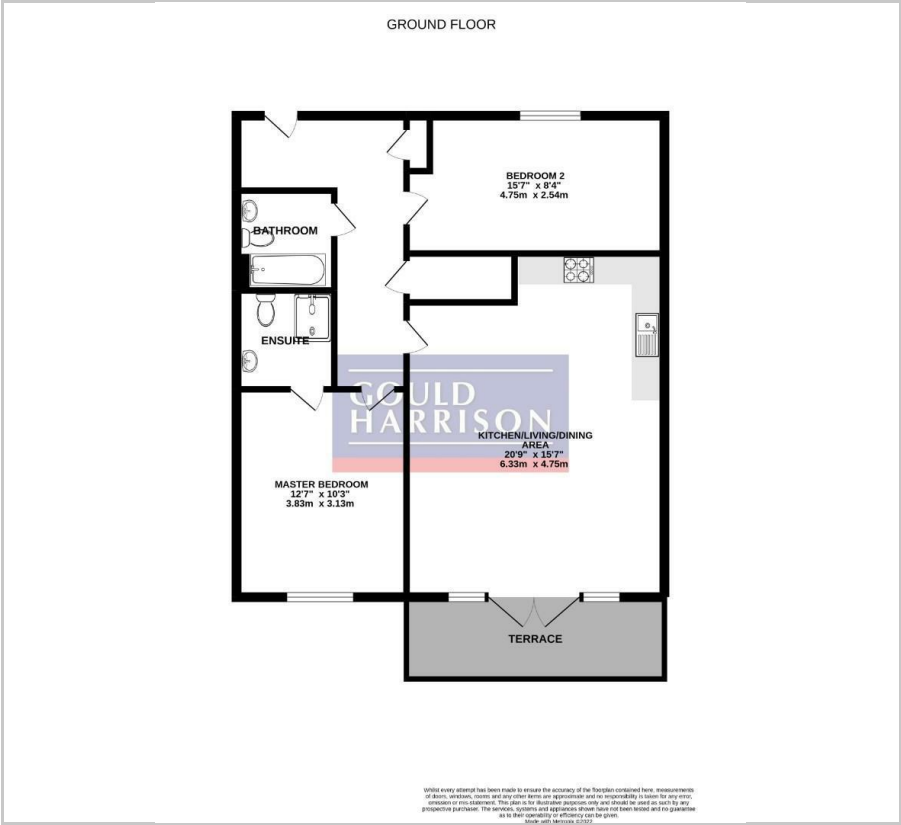
Please contact our Ashford Office on 01233 646411 if you wish to arrange a viewing appointment for this property or require further information.

- GROUND FLOOR APARTMENT
- TWO DOUBLE BEDROOMS
- EN-SUITE TO MASTER BEDROOM
- FAMILY BATHROOM
- OPEN PLAN LOUNGE/KITCHEN
- PRIVATE BALCONY
- ALLOCATED PARKING
- SECURITY DEPOSIT £1384
- EPC RATING B
- COUNCIL TAX B





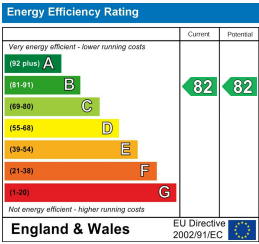
Floor Plan



Area Map



Energy Efficiency Graph



These particulars, whilst believed to be accurate are set out as a general outline only for guidance and do not constitute any part of an offer or contract. Intending purchasers should not rely on them as statements of representation of fact, but must satisfy themselves by inspection or otherwise as to their accuracy. No person in this firms employment has the authority to make or give any representation or warranty in respect of the property.